



Newsletter  
Term 6  
Friday 21<sup>st</sup> July 2023

Dear parents and carers,

We have come to the end of the school year and what a year it has been. We now have some very tired children and staff who are more than ready for their summer break. It has been a lovely day today, celebrating their time in their current classes!

Thank you to all those parents and carers who attended the meet the teacher sessions this week. We hope they were useful.

A big thank you to you all for your continued support and kindness throughout the year- we really do appreciate it. We know we have a fantastic St Anne's family.

Have a wonderful summer break everyone and we look forward to welcoming you all back on **Wednesday 6<sup>th</sup> September**.

[emma.hardysmith@saca.theplt.org.uk](mailto:emma.hardysmith@saca.theplt.org.uk)

Follow me on Twitter @StAnnes\_EHS



### YEAR SIX

A huge good luck to our wonderful year six cohort who have come to the end of their seven years at St Anne's. They had been an incredible year group and have been wonderful role models, playleaders and children's worship leaders. They have had a very busy week with their productions and church leavers' services. They are more than ready for the next stage in their education journey. They are heading off to several different secondary schools and we know that they will continue to flourish and take with them everything they have learnt during their time with us. We will miss them all and their families. Good luck to you all. Enjoy your end of year parties – you deserve it!

Thank you to all the year six staff who have worked hard this term to put together the year six end of year celebrations and events.

### 2023 OUTCOMES

**We are delighted to say that outcomes have been strong for all year groups this year at St Anne's. Please see the summary of statutory assessments below.**

The percentage of children achieving a Good Level of development in EYFS is 76% which is well above the national average of 65% ( 2022)

The percentage of year 1 children achieving the expected level for the phonics screening was 83% which is above the national average of 75% (2022)

#### KS1

The percentage of children achieving the expected level for reading at the end of KS1 was 76% with 20% achieving the higher level ( 2023 National average is 68%)

The percentage of children achieving the expected level for writing at the end of KS1 was 73% with 7% achieving the higher level ( 2023 National average is 71%)



The percentage of children achieving the expected level for maths at the end of KS1 was 80% with 7% achieving the higher level ( 2023 National average is 70%)

## **KS2**

The percentage of children achieving the expected level for reading at the end of KS2 was 76% with 28% achieving the higher level ( 2023 National average is 73%)

The percentage of children achieving the expected level for writing at the end of KS2 was 79% with 10% achieving the higher level ( 2023 National average is 71%)

The percentage of children achieving the expected level for writing at the end of KS2 was 79% with 22% achieving the higher level ( 2023 National average is 73%)

The percentage of children achieving the expected combined level for reading, writing and maths at the end of KS2 was 71% which is significantly above the 2023 National average of 59%.

A huge well done to all our children and staff who have worked incredibly hard this year to achieve these excellent outcomes. We are so very proud of everyone.

## **SOCIAL MEDIA KINDNESS**

Please can we ask that all parents and carers to always be kind and respectful. Please do not use parent Whats App and Facebook groups to air grievances about the school or school staff. This is not appropriate at all and leads to gossip and miscommunication. Please contact the school directly to share any concerns or worries you may have. If you want to take concerns further, the TPLT complaints policy is available on the website.

Please do not use social media to criticise individual members of staff. We are all professionals and are working incredibly hard. You may not always agree with the school decisions but it is simply not acceptable to use social media platforms to criticise and slander school staff. The negative impact on the wellbeing of staff is huge.

Our school vision is 'Learn to Love' – we teach our children to try to always be kind and treat others with respect. We should all model this. The vast majority of parents and carers at St Anne's are incredibly kind and supportive but there is a small number of parents who use email and social media to criticise our school and its staff. Please be kind.

## **PARENTPAY & NEW SYSTEMS**



From September we will no longer be using ParentPay. Please login to your account and settle any outstanding payments. If your account is in credit we will be issuing refunds which you will then be able to withdraw from your account as a payer. Refunds will be issued before the end of next week.



Everyone should now have received a letter with activation details for the new ordering system from Aspens. Please be aware that you still need to register and place lunch orders direct to Aspens even if you do not pay for school meals. The menu will go live on Monday 24<sup>th</sup> July.



Payments for clubs and trips will be collected via Weduc. If you already have the app you don't need to do anything else – the payment option will be available to see once it is active. If you don't have this app yet please download it now ready for September.

If you have any queries about the new systems please ask a member of the office crew and we will be happy to help.

## **ASTHMA INHALERS AND MEDICATION**

ALL Medication will be sent home for the summer break. Please check your medication expiry dates, and if necessary request new inhalers/epipens from your pharmacy if required before your children return in September.

### BUSY BEES DONATION REQUEST

Our Busy Bees at West Wick are looking for some toy tools for our construction play area. If anybody has anything they are willing to donate, they will be gratefully received

### READY, SET, READ CHALLENGE

For this summers 'Feel Fab' challenge we are getting behind the 'Ready, Set, Read' challenge.

<https://summerreadingchallenge.org.uk/readysetrear-bc-landing>

Get ready for a whole load of team spirit, your fave sporty (or not!) heroes, and plenty of fun with our latest collection for the 2023 sports and games themed Summer Reading Challenge: Ready, Set, Read! Each book has been specially chosen by an expert group of readers for everybody taking part to enjoy. The challenge encourages children and families to keep reading over the summer break and also to keep active. Why not get involved!

### CARPARK SAFETY

Please can we ask all parents and carers to be very careful when using our school car parks. **The speed limit is 5mph to keep everyone safe.** Please be very mindful of pedestrians when reversing in and out of spaces. The West Wick car park is for staff and nursery parents and carers only. **If your child uses the Little Farm shuttle bus, please do not use the carpark for dropping off your children.**

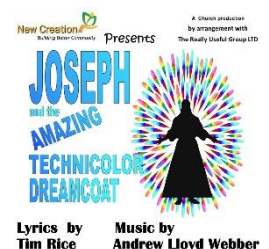


After consulting our local PCSOs, we have been advised to reinstate the drop off zone in the Hewish car park from September. **The drop off zone is for dropping off children only.** Children should then cross the carpark using the zebra crossing independently. We recommend this area for older children who are able to walk into school without an adult. If you would like to park up and escort your children into school, please park in other areas of the car park. Staff will monitor the car park but we ask that all parents and carers use the car park at Hewish respectfully. Please keep the disabled spaces for blue badge holders only. Please do not arrive in the carpark before 2:45pm. If you do arrive early, please fill the empty spaces before double parking and blocking other cars. The car park is congested at the end of the day due to our location so we ask everyone to be calm and patient. The carpark is usually clear within ten minutes so please allow for this when picking your children up at the end of the day. Thank you for your support to keep our car parks as safe as possible for all children and their families.

### NEW CREATION CHURCHES- JOSEPH WORKSHOPS

In March 2024, the New Creation Churches are performing Joseph and the Amazing Technicolor Dreamcoat and they would like to get as many people involved as possible. This includes St Anne's Church Academy. Some of our children will be singing in the choir to accompany the performance. Various workshops have been arranged that are open to all whether you want to be part of the performance or not. They will be fun filled with lots of activities including singing, dancing, drama and crafts. These workshops are free you just need to bring a packed lunch. We have a limited number and they are based on a first come first serve basis. The evening workshop is more for adults who would like to take part or just want to find out more about it.

If you are interested or want to book a place see the separate form sent with the newsletter.



### PTFA SUMMER FETE

Thank you to our PTFA who organised our summer fair on July 8<sup>th</sup>. It was very well attended and despite the downpour we hope you enjoyed it. Despite being cut short by the deluge, £1700 was raised to support the school. Thank you to the families who have contacted our PTFA to get involved and help with our future events. This means that we will be able to go ahead and plan events for the community in Term 1 which is fantastic news. Look out for the date of the very popular Christmas fair soon.

## SAD GOODBYES AND WARM WELCOMES

Sadly, we have a few staff leaving us today. At West Wick, we have Mrs Binns and Mrs Hewitt leaving. Both of them are leaving teaching and are very excited about their new hopefully less exhausting adventures. Both have been absolutely fantastic teachers at St Anne's for a number of years and have made an enormous impact on the children they have taught. They have been wonderful colleagues and will be sorely missed by all. Miss Gordon is leaving her role as a teaching assistant in Busy Bees to increase her hours at Little Farm childcare, who are our afterschool childcare provider, so we will still be lucky enough to see her lots.



At Hewish, Miss Axford is leaving to take up a permanent position at Kingshill Primary school. Miss Axford stepped in to help cover our year two class in January due to a reshuffle of staff. She is very excited to have her own class for the first time. Thank you Miss Axford. We wish her lots of luck in her new role.

Finally, Mrs Cammish is leaving her role as a Learning support assistant to take up a role with Weston College.

Thank you to all of these staff. They have all been fabulous. Good luck to all of them. We say that once you have been a part of the St Anne's family, you will always be part of us. We hope that we will hold a special part in your heart too.

We are delighted to welcome a number of new staff who will be joining the school from September too.

### **We welcome three new teachers:**

Mrs Gibson – Year 2 Hewish

Miss Poole - Year 5 WW

Mrs Hoskins – Busy Bees ( Reception) WW

### **We also welcome the following new support staff:**

Miss Croom

Mrs Robinson

Miss Bown

Mrs Pike

## DIARY DATES

**Friday 21<sup>st</sup> July** – End of term

**Monday 4<sup>th</sup> & Tuesday 5<sup>th</sup> September** - INSET days

**Wednesday 6<sup>th</sup> September** – first day of Term 1 for children

**Friday 13<sup>th</sup> October** – INSET day

**Monday 30<sup>th</sup> October** – First day of Term 2

**Wednesday 20<sup>th</sup> December** – Last day of Term 2

**Thursday 4<sup>th</sup> January** – First day of Term 3